

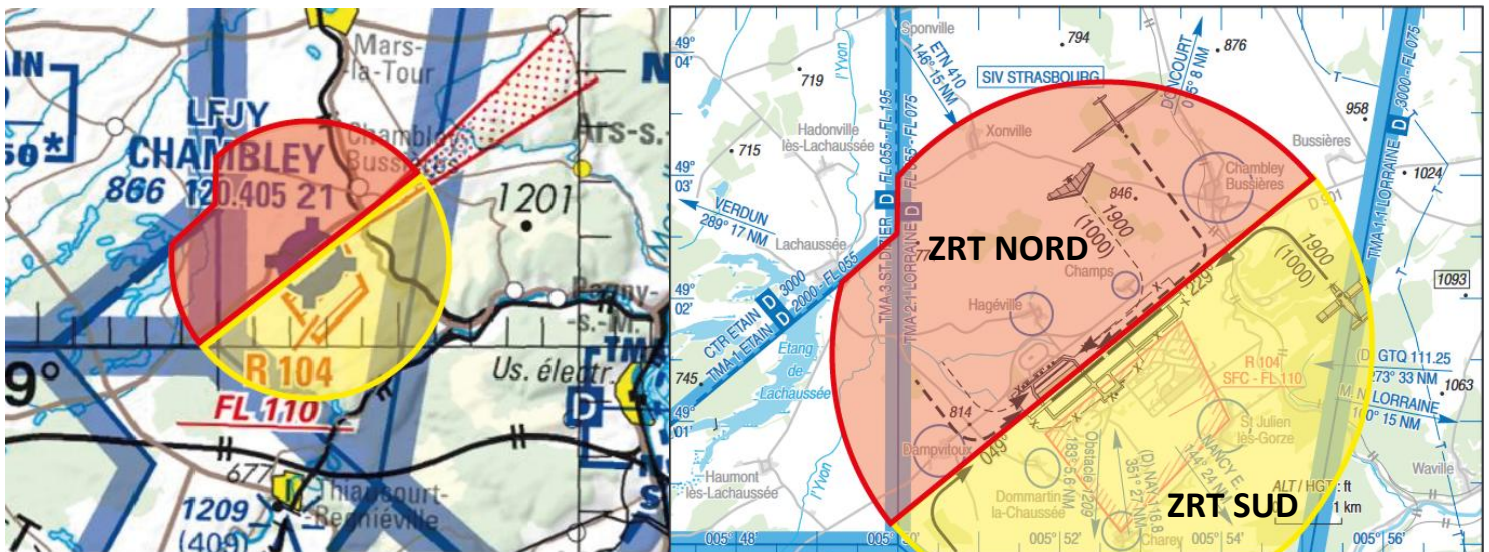
BRIEFING

ZRT

➤ Creation of a ZRT

A ZRT (Temporary Restricted Area) is created for the duration of the "World ULM Championships / WMC-WPC 2025", divided into two parts:

- ❖ **ZRT NORD:** Northern Sector
- ❖ **ZRT SUD:** Southern Sector



Volumes :

- A half-circle with a 2 NM radius centered on N 49°01'33" – E 005°52'34" (Chambley AD LFJY) outside CTR and TMA,
- Surface to 4000 ft AMSL,



WMC 2025 > PILOTS BRIEFING > ZRT

Activation periods:

- From 04 August 2025 to 16 August 2025, 0000LT to 2359LT
- From 19 August 2025 to 01 September 2025, 0000LT to 2359LT

Activities:

- **ZRT NORD:** Aircraft operating for competition flights
- **ZRT SUD:** Integration of based and external aircraft

Entry conditions:

Mandatory avoidance (CAG/CAM) required during ZRT activation, except for:

- Aircrafts participating in the World Championships operating within ZRT NORD,
- Aircraft departing or arriving at Chambley on Runway 05R/23L, reserved exclusively for PPR aircraft (1 hr prior permission required) granted by flight coordinators operating within ZRT SUD,
- Aircraft conducting assistance, rescue, or public safety missions when avoidance is incompatible with mission execution and after coordination with flight coordinators.

User information:

- SIV STRASBOURG
- TWR NANCY
- TWR ETAIN
- AD CHAMBLEY A/A 120.405 MHz (if ZRTs are active)

Contacts:

Flight Coordinator on A/A 120.405 MHz

Or by phone:

- +33 6 17 30 27 95: **Guy FRADILLON**
- +33 6 78 43 11 93: **Alain DUGAS**

➤ Conditions of use

Arriving aircraft for the competition:

You must arrive overhead southeast of the 05R/23L runway axis to enter ZRT SOUTH after radio contact, then join Runway 05R/23L circuit via the southeast circuit only.

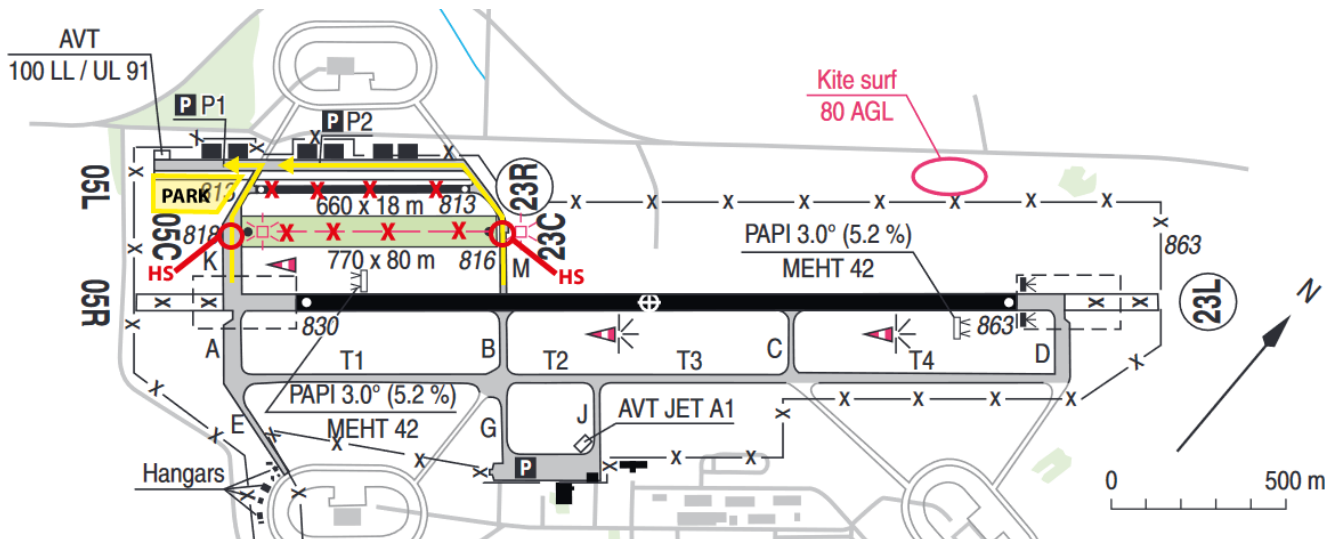
➤ If arriving between 04/08 and 05/08:

Then free the runway via **holding point K only**, ensure no traffic on 05C/23C axis (grass runway) before crossing : Hot Spot (HS). Taxi cautiously **via taxiway K only**. Once at threshold of runway 05C, **shut down your engine**—no engines allowed beyond this point!

Note: Taxiway M is closed!

➤ If arriving after 05/08:

Free the runway via **holding point K or M**, ensure no traffic on 05C/23C (grass runway) axis before crossing : Hot Spot (HS). Taxi cautiously **via taxiways K or M**. Proceed with caution to parking (PARK).



External aircraft to the competition:

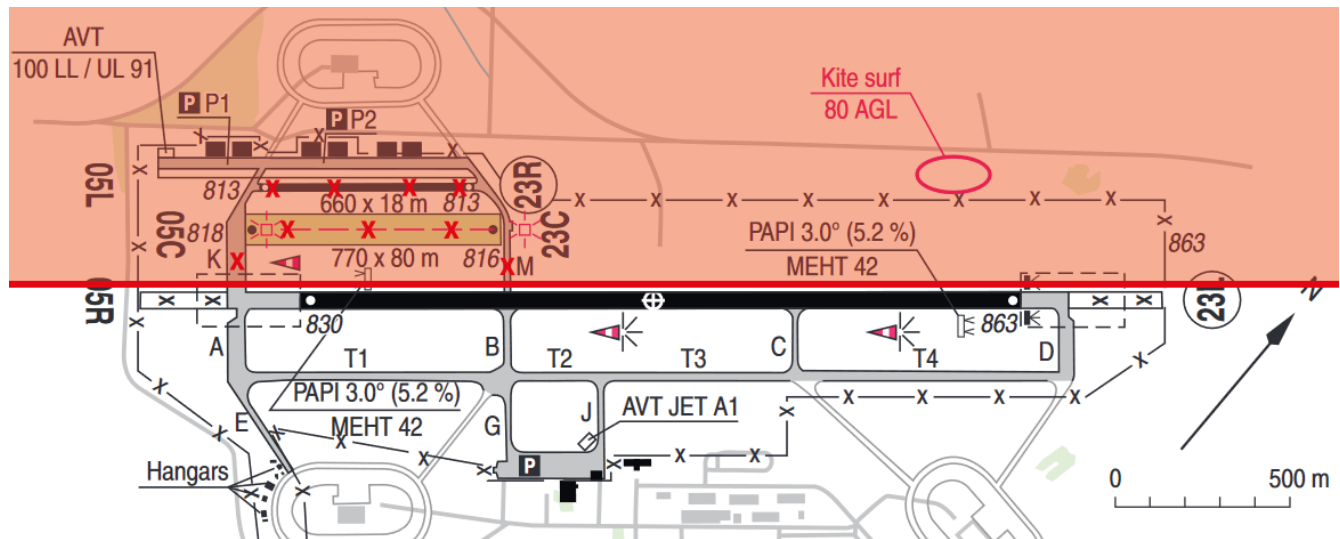
Please note in ZRT NORTH:

- Aircraft operate without radio, from surface up to 4000 ft AMSL,
- For safety reasons, they may interfere with the axis and runway 05R/23L **and have priority**,
- Presence of pedestrians wearing hi-visibility vests on runways and taxiways,
- Competition aircraft may land anywhere within ZRT NORD.

Adjust your overhead position southeast of the 05R/23L axis; only runway 05R/23L is available for external and based aircraft.

Taxiways K and M are unavailable except for based aircraft and maintenance workshop needs.

Runways 05L/23R and 05C/23C are reserved exclusively for competitors authorized by race directors.



Based aircraft:

Follow instructions from flight coordinators and race directors prior to each departure and arrival.

If you need any additional formatting or terminology adjustments, feel free to ask!